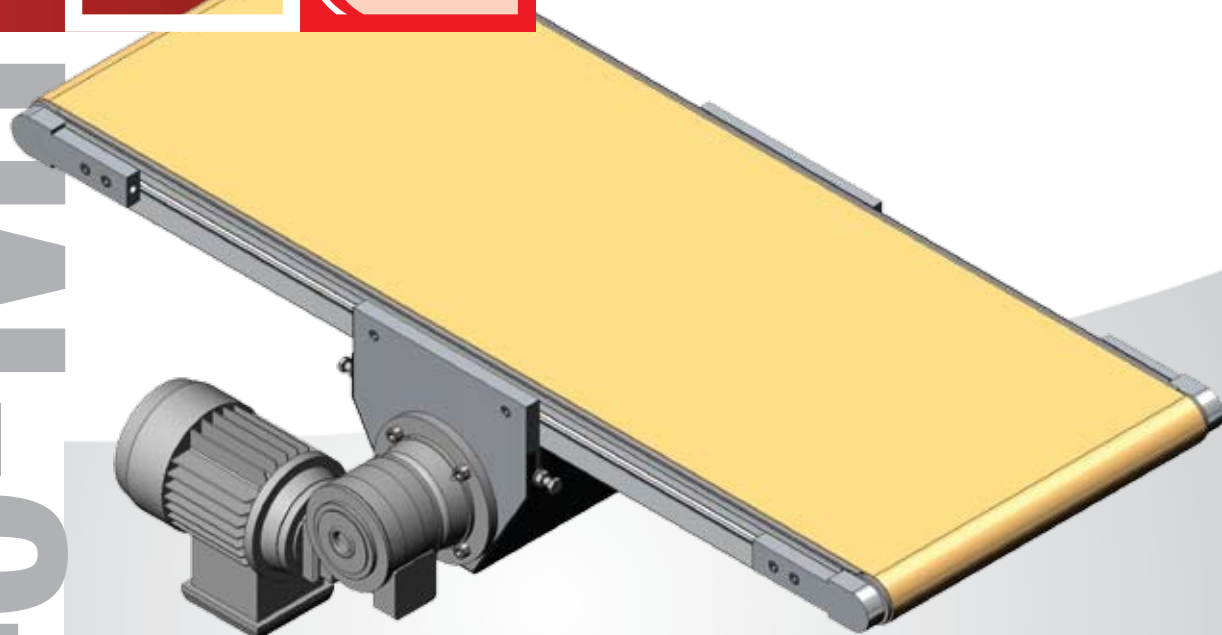


# belt conveyors

ECA



## ECA40-M1

### Center Drive

Belt conveyors are ideal for linear, horizontal or even as incline transport of goods. Easy conveyors has developed a wide range of modular conveyor systems with synthetic belts. Key concept of the system is quick and easy to assemble thanks to modular design, high performance, safe and low noise level are the characters of the systems.

The ECA 40-M1 serie is the conveyor for the medium load and a maximum length of 12 meters with a maximum wide of 600 mm. The rollers have a diameter of 45 mm. The frame is build up out of aluminum anodized profiles with a slide at the side where you can mount the side guiding and the supports

## ECA 40 FRAME

### ECA 40 SIDE PROFILE

Material: Aluminum, 12 micron anodized  
 Fabrication size = center to center minus 70 mm (A)  
 Package: 1 piece  
 Profile ECA 40 L=5600 mm; VE=5 **ECA04090000**

### ECA 40 COUPLE SET

Material: Aluminium, 12 micron anodized  
 Package: 1 connector, 2 brackets with fasteners

Connector B = 200 mm	<b>ECA04090020</b>
Connector B = 300 mm	<b>ECA04090030</b>
Connector B = 400 mm	<b>ECA04090040</b>
Connector B = 500 mm	<b>ECA04090050</b>
Connector B = 600 mm	<b>ECA04090060</b>

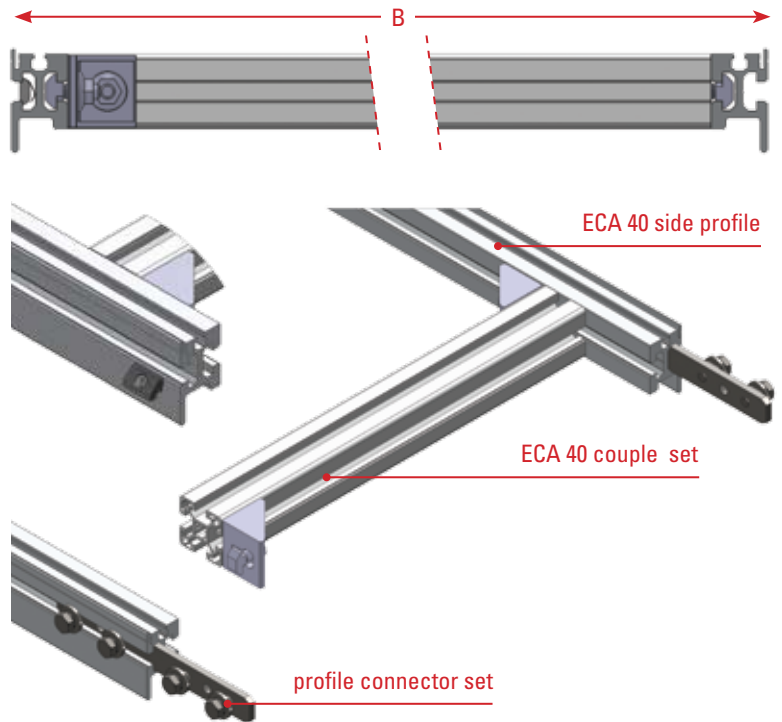
### PROFILE CONNECTOR SET

Material: Steel, galvanized  
 Package: 2 pieces with fastener  
 Profile connector set **EMPT040705000006**

### SLIDENUT

Material: Steel, galvanized  
 Package: 25 pieces

Slide nut M6	<b>040115000001</b>
Slide nut M8	<b>040115000002</b>



ECA 40 side profile

ECA 40 couple set

profile connector set

slide nut

## ECA 40 DRIVE

### IDLER UNIT 40

Material: Aluminum die cast  
 Package: Left and right support plate with fasteners  
**ROLLER NOT INCLUDED** **ECA04090000S**

### IDLER ROLLER 40

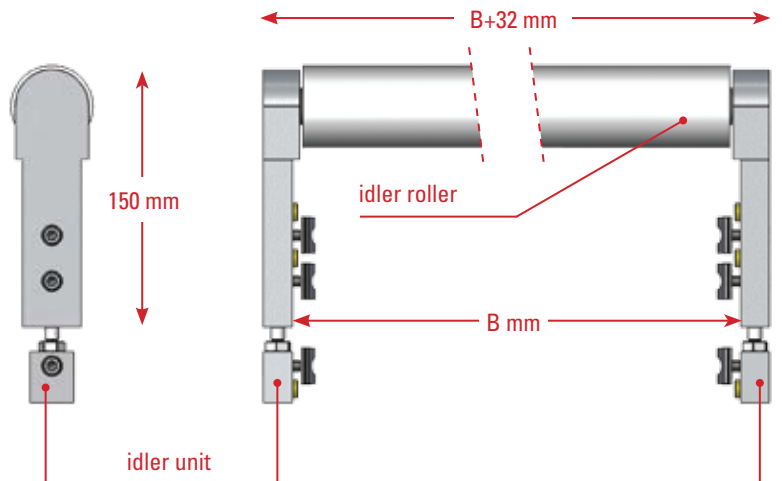
Material: Stainless steel shaft with aluminum cover tube  
 Package: 1 piece, diameter 45 mm

Length: Idler roller set B-200 mm	<b>ECP04090020S</b>
Length: Idler roller set B-300 mm	<b>ECP04090030S</b>
Length: Idler roller set B-400 mm	<b>ECP04090040S</b>
Length: Idler roller set B-500 mm	<b>ECP04090050S</b>
Length: Idler roller set B-600 mm	<b>ECP04090060S</b>

### SUPPORT ROL

Material: Stainless steel shaft with aluminum cover tube  
 Package: per piece

Length: Support axe B-200 mm	<b>ECA00093020</b>
Length: Support axe B-300 mm	<b>ECA00093030</b>
Length: Support axe B-400 mm	<b>ECA00093040</b>
Length: Support axe B-500 mm	<b>ECA00093050</b>
Length: Support axe B-600 mm	<b>ECA00093060</b>



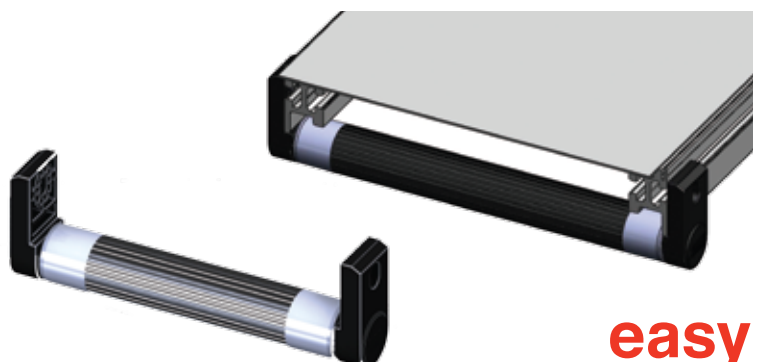
150 mm

B+32 mm

idler roller

B mm

idler unit



## ECA 40 DRIVE UNIT

### CENTER DRIVE UNIT 40

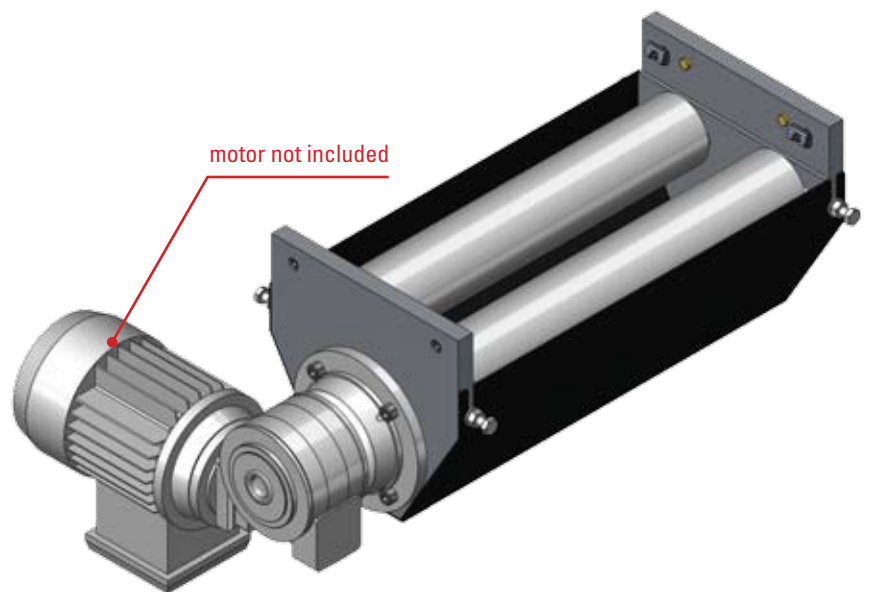
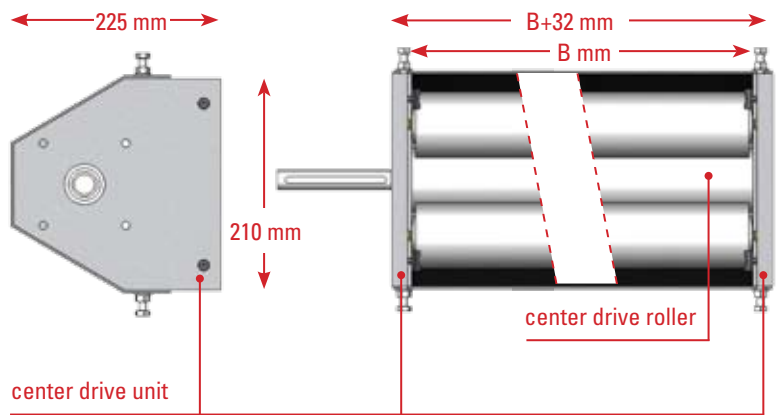
Material: Aluminum die cast  
 Package: Left and right support plate with fasteners **ECA04084000S**

ROLLER AND GEARMOTOR NOT INCLUDED  
 FOR GEARMOTORS SEE SHEET "GEARMOTORS"

### CENTER DRIVE ROLLER

Material: Stainless steel shaft with aluminum cover tube  
 Package: 1 drive roller diameter 65 mm,  
 2 tensioner rollers diameter 45 mm

Direct center drive roller set 200 mm	<b>ECP04084020S</b>
Direct center drive roller set 300 mm	<b>ECP04084030S</b>
Direct center drive roller set 400 mm	<b>ECP04084040S</b>
Direct center drive roller set 500 mm	<b>ECP04084050S</b>
Direct center drive roller set 600 mm	<b>ECP04084060S</b>



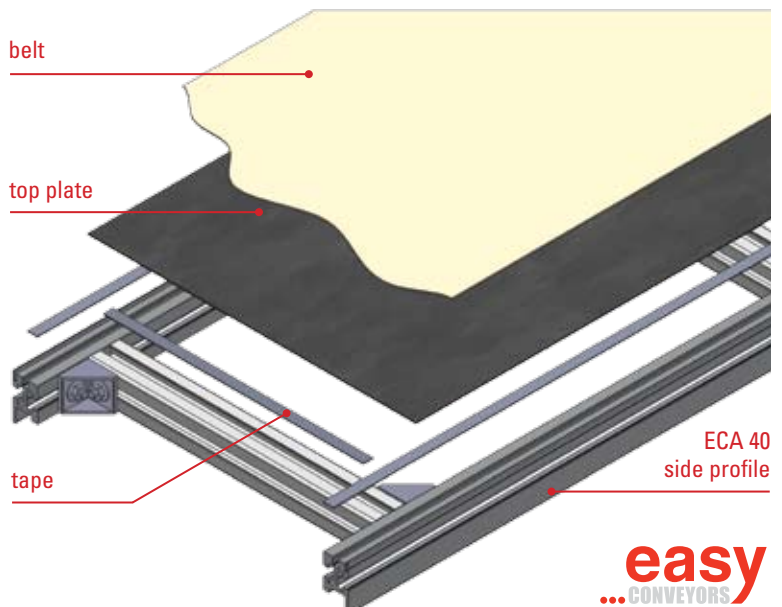
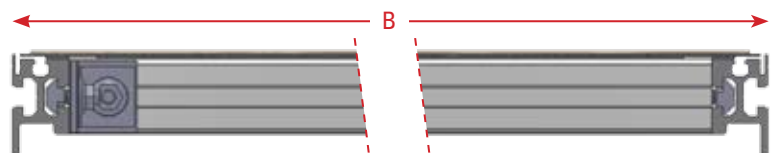
## ECA TOP PLATE + BELT

### ECA TOP PLATE TAPE

Material: 2 sided tape  
 Package: 1 roll of 33 meters **ECA00092100**

### ECA TOP PLATE 40

Material: Steel galvanized 2 mm  
 Package: on request  
 Fabrication size A-45 mm, B-5 mm **ECA00092000**



FOR BELT MATERIAL SEE PRODUCTSHEET  
 "BELT MATERIAL"

FOR GEARMOTORS SEE PRODUCTSHEET  
 "GEARMOTORS"

FOR SIDE GUIDING SEE PRODUCTSHEET  
 "SIDE GUIDING"

# ECA40-M1

